

Miniatures in Paper #10

Starships, Captains, & Crew

Volume #1: Figures

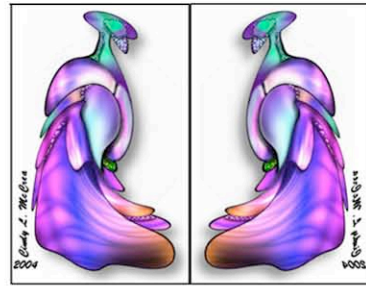


As part of this months theme artists could design any starship crewmembers, officers, alien captains, starships, shuttles, starship interiors, servobots, alien landscapes and artifacts, futuristic machinery, floorplans, and pointy-eared pop singers.

March & April 2004

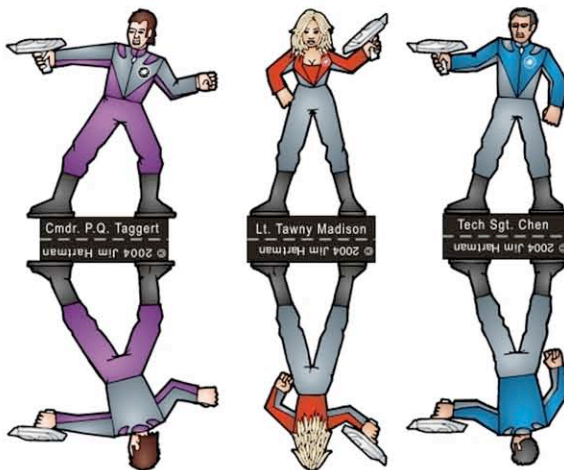


Klingons copyright Paramount Pictures.
Artwork by Valyne Peters - 28mm figures, print at 300 dpi.



"Alien Being"
-by Evialla

Klingons
-by Scarecrow



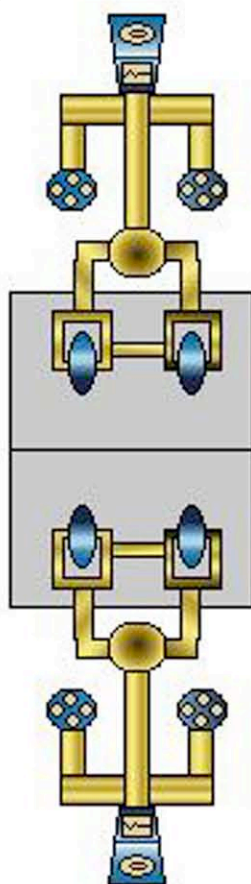
Galaxy Quest crew
-by ONE-MONK

Galaxy Quest crew for
Miniatures in Paper 10



Miniatures in Paper
#10

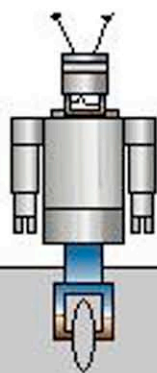
Starships, Captains,
& Crew



Al the "Defender"
bot

Welding dual gatling
guns Al will defend
your starship from
even the largest
interstellar rats.

*Interstellar robot
construction is not
responsible for any
"accidents"
regarding
misidentification.*



Helper Bot -
Model 43

This bot will
clean up, work
the controls or
do pretty much
what ever else
you want him to
do!



Vending machine
bot - Model 1A

The first and
finest vending
machine robot.
Let it roam the
hallways and give
you and your crew
the refreshment it
needs during those
long jumps.

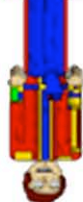


Hover Bot "Bob"

Bob has a personality
chip programmed to be
cheery while it hovers
down your hallway
assisting in the carrying
and loading of large
objects.

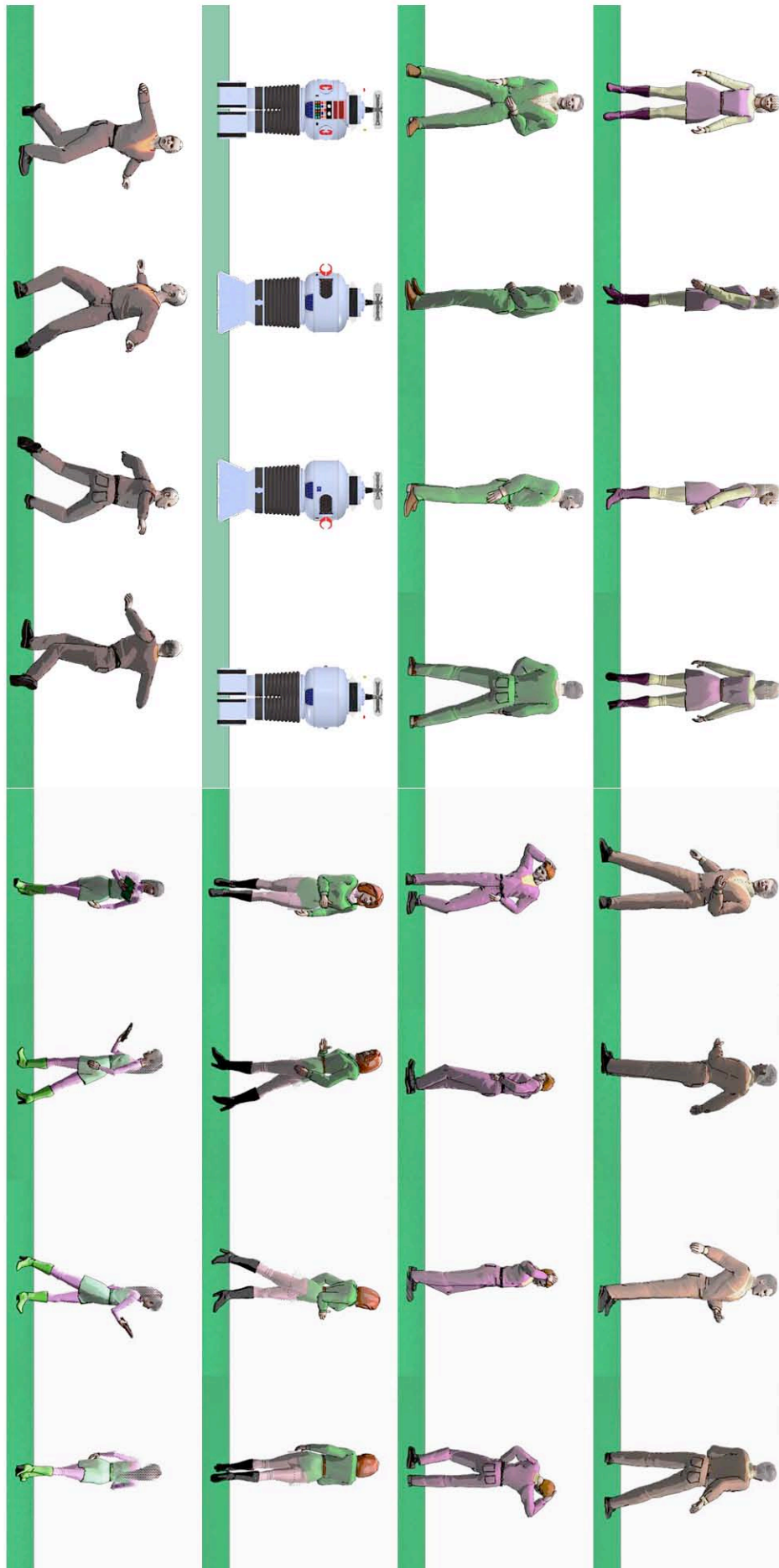


Robots, foppish captain,
and crew
-by Evilnames



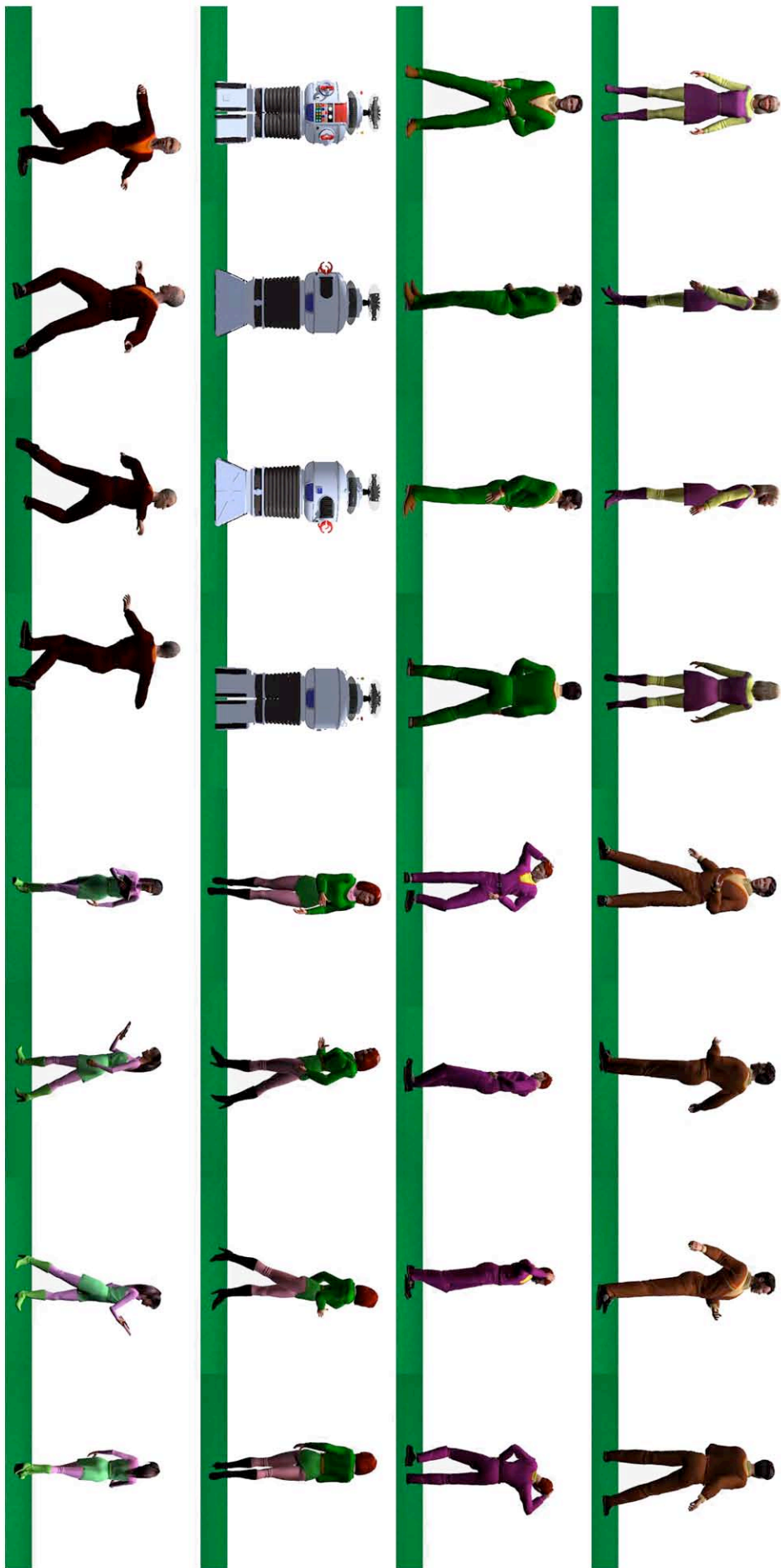
Miniatures in Paper
#10

Starships, Captains,
& Crew



“Lost in Space”
Toon renders
-by Curufea

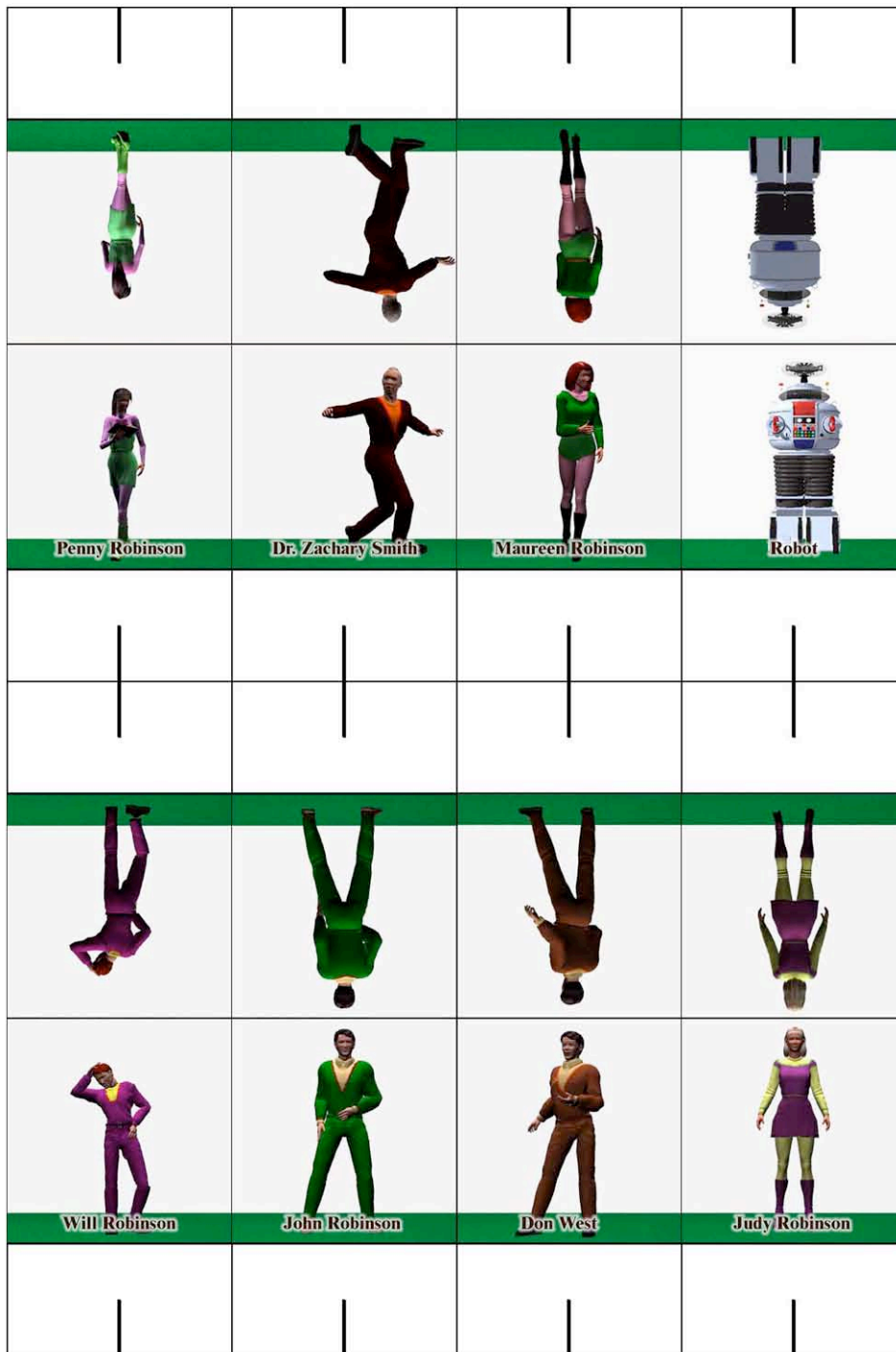
Miniatures in Paper
#10
Starships, Captains,
& Crew



"Lost in Space"
Rendered versions
-by Curufea

Miniatures in Paper
#10

Starships, Captains,
& Crew

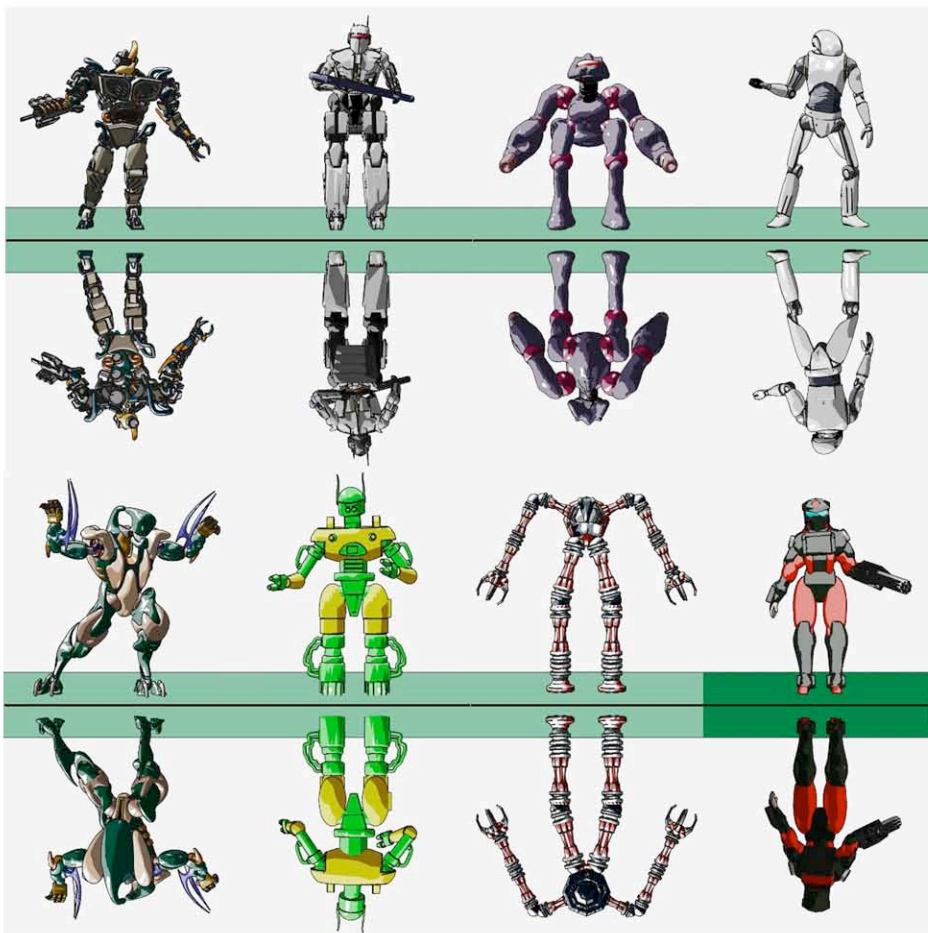


"lost in Space"
Final versions
-by Curufea

Miniatures in Paper
#10
Starships, Captains,
& Crew



Robots; Final
versions
-by Curufea



Robots; Toon
versions
-by Curufea

Miniatures in Paper
#10

Starships, Captains,
& Crew



Starship Captain and Crew
Created for Miniatures in Paper 10
Scaled for 28mm, with non-tipping, perpendicular style attached bases.
Image Resolution: 200 ppi (pixels per inch)
Pixel Depth: 24. Colors: 16 million.
By Cindy L. McCrea, 2004.

Score & Fold 	Score & Fold Vertically		Cindy L. McCrea 2004		Cindy L. McCrea 2004		Cindy L. McCrea 2004
	Score & Fold Horizontally 	Captain Andrew Shukar	Captain Andrew Shukar Scaled for 28mm By Cindy L. McCrea 2004	Vice Admiral Ambassador Ulima Zera Diplomatic Corps Scaled for 28mm By Cindy L. McCrea 2004	Comm. Officer Lieutenant Driscoll Keagan Scaled for 28mm By Cindy L. McCrea 2004	Score & Fold to underneath then glue to horizontal tabs Side view when finished.	

	Cindy L. McCrea 2004		Cindy L. McCrea 2004		Cindy L. McCrea 2004
Lieutenant Commander Lexine Drina Tactical/Security	Lieutenant Commander Lexine Drina Tactical/Security Scaled for 28mm. By Cindy L. McCrea 2004	Lieutenant Marillise Collins Tactical/Security	Lieutenant Marillise Collins Tactical/Security Scaled for 28mm. By Cindy L. McCrea 2004	Crewman Joseph Matthews Tactical/Security	Crewman Joseph Matthews Tactical/Security Scaled for 28mm. By Cindy L. McCrea 2004

	Cindy L. McCrea 2004		Cindy L. McCrea 2004
Lieutenant Adler Raynard Tactical/Security	Lieutenant Adler Raynard Tactical/Security Scaled for 28mm. By Cindy L. McCrea 2004	Crewman Ito Ken'ichi Tactical/Security	Crewman Ito Ken'ichi Tactical/Security Scaled for 28mm. By Cindy L. McCrea 2004

By Cindy L. McCrea, 2004.

**Captain
Andrew Shakur
Scaled for 28mm
By Cindy L. McCrea
2004**

Lieutenant
Commander
Lexine Dima
Tactical/Security
Scaled for 28mm.
By Cindy L. McCrea
2004

—

Starship Captain and Crew
Created for Miniatures in Paper 10
Character Cards
1-4 of 8 Cards
Dimensions: 2.50" wide x 3.50" high
Image Resolution: 200 ppi (pixels/inch)
Pixel Depth: 24
Colors: 16 million
By Cindy L. McCrea, 2004



Recommended Output: High Print Quality, Photo/Glossy Paper.

Starship Captain and Crew
Created for Miniatures in Paper 10
Character Cards
2-8 of 8 Cards
Dimensions: 2.50" wide x 3.50" high
Image Resolution: 200 ppi (pixels/inch)
Pixel Depth: 24
Colors: 16 million
By Cindy L. McCrea, 2004



Recommended Output: High Print Quality, Photo/Glossy Paper.